

Figure 12  
**VOLUME AND CAPACITY DEFICIENCY**



**Carteret County**  
 CTP Analysis and Information  
 Volume and Capacity Ratio Features  
 (Future Year 2050)

**Carteret County**

Volume and Capacity Ratio Features  
 (Future Year 2050)

2050 Volume Capacity	Under Capacity (0-0.79)
2050 Volume Capacity	Near Capacity (0.80-0.99)
2050 Volume Capacity	Over Capacity (1.00+)

Other Features

Studied Roads
MPO Boundary
RPO Boundary



Base map date: October 02, 2019

**Legal Disclaimer**

This product contains mapping data for informational and planning purposes only, and is subject to change. Users should review or consult the primary data sources to ascertain the usability of the information.

Plan Date: April 13, 2026

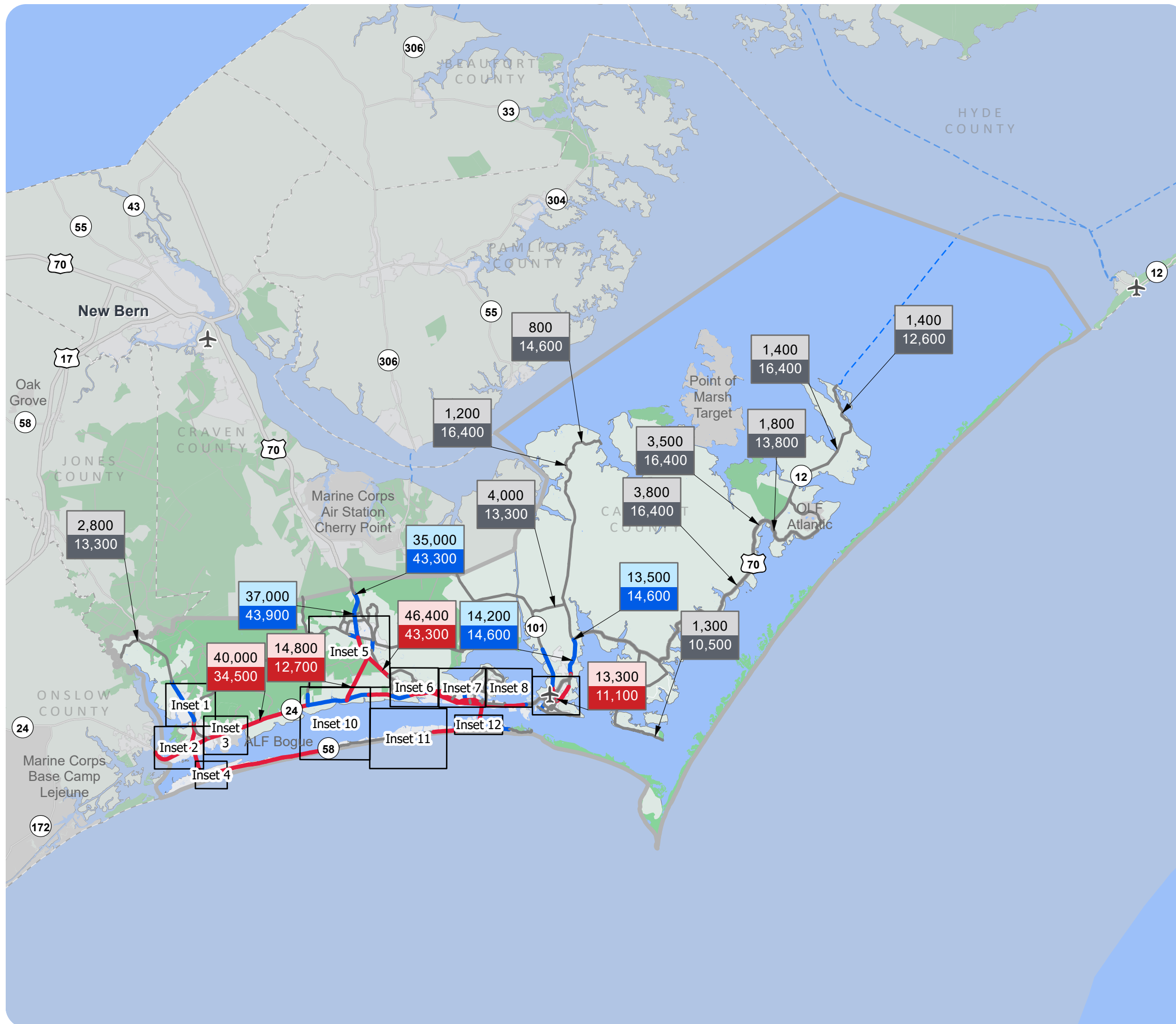


Figure 12  
**VOLUME AND CAPACITY DEFICIENCY**



**Carteret County**  
 CTP Analysis and Information  
 Volume and Capacity Ratio Features  
 (Future Year 2050)

**Inset 1**  
**Peletier**

Volume and Capacity Ratio Features  
 (Future Year 2050)

2050 Volume Capacity	Under Capacity (0-0.79)
2050 Volume Capacity	Near Capacity (0.80-0.99)
2050 Volume Capacity	Over Capacity (1.00+)

**Other Features**

	Studied Roads
	MPO Boundary
	RPO Boundary



Base map date: October 02, 2019

**Legal Disclaimer**

This product contains mapping data for informational and planning purposes only, and is subject to change. Users should review or consult the primary data sources to ascertain the usability of the information.

Plan Date: April 13, 2026

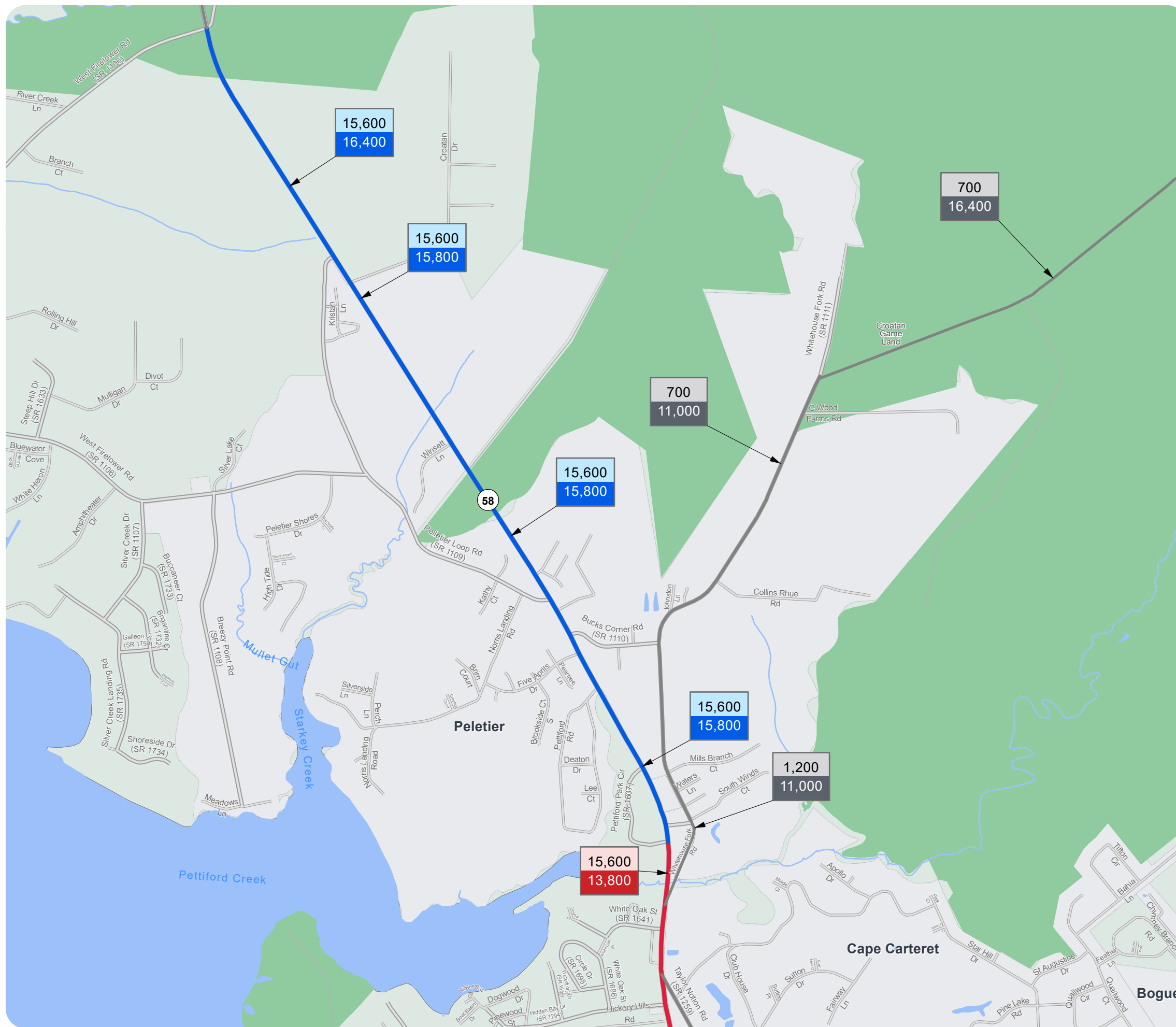


Figure 12  
**VOLUME AND CAPACITY DEFICIENCY**



**Carteret County**  
 CTP Analysis and Information  
 Volume and Capacity Ratio Features  
 (Future Year 2050)

**Inset 2**  
**Cedar Point and Cape Carteret**

Volume and Capacity Ratio Features  
 (Future Year 2050)

2050 Volume Capacity	Under Capacity (0-0.79)
2050 Volume Capacity	Near Capacity (0.80-0.99)
2050 Volume Capacity	Over Capacity (1.00+)

Other Features

	Studied Roads
	MPO Boundary
	RPO Boundary



Base map date: October 02, 2019

**Legal Disclaimer**

This product contains mapping data for informational and planning purposes only, and is subject to change. Users should review or consult the primary data sources to ascertain the usability of the information.

Plan Date: April 13, 2026

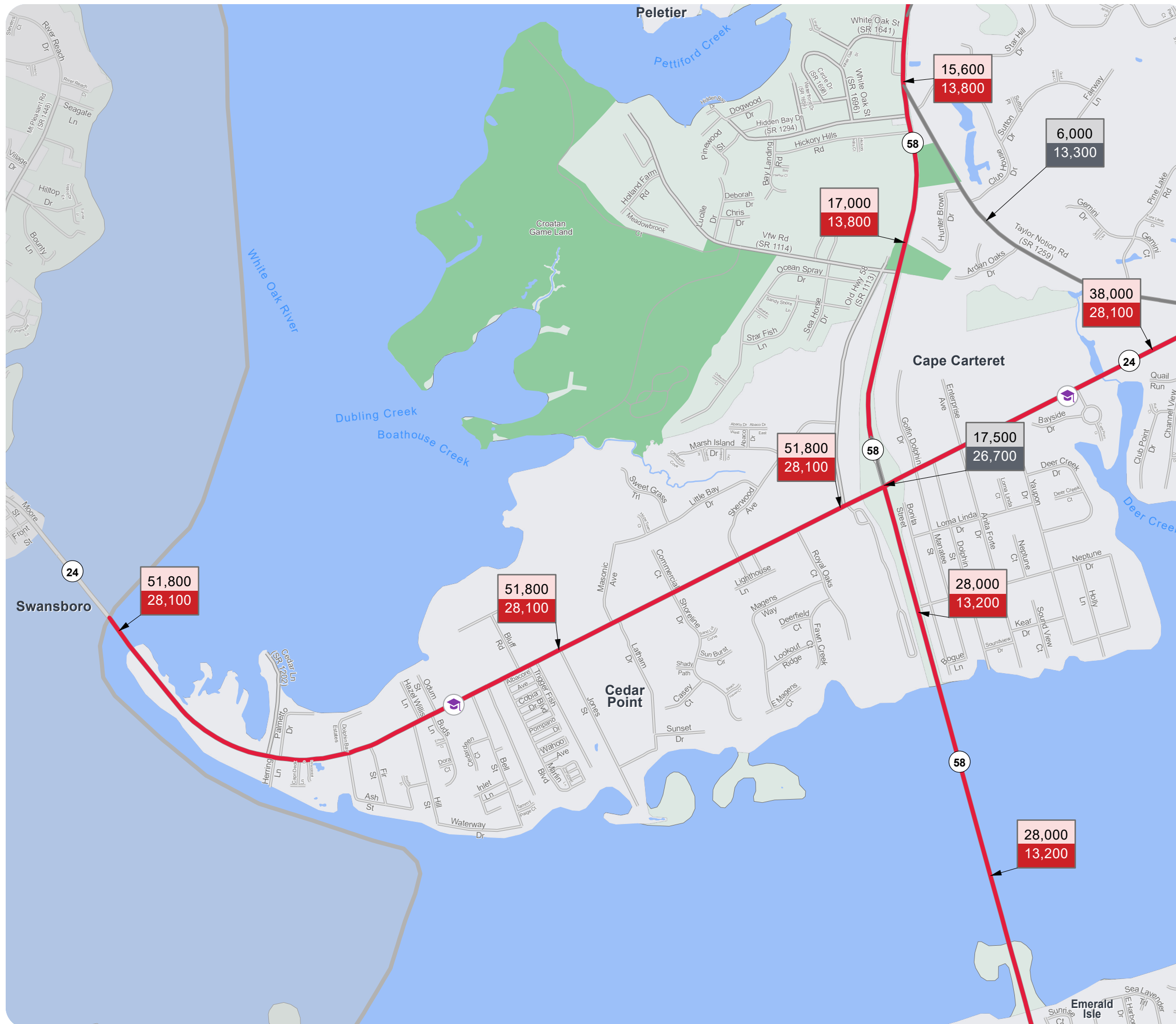


Figure 12  
**VOLUME AND CAPACITY DEFICIENCY**



**Carteret County**  
 CTP Analysis and Information  
 Volume and Capacity Ratio Features  
 ( Future Year 2050)

**Inset 3**  
**Bogue**

Volume and Capacity Ratio Features  
 ( Future Year 2050)

2050 Volume Capacity	Under Capacity (0-0.79)
2050 Volume Capacity	Near Capacity (0.80-0.99)
2050 Volume Capacity	Over Capacity (1.00+)

**Other Features**

	Studied Roads
	MPO Boundary
	RPO Boundary



Base map date: October 02, 2019

**Legal Disclaimer**

This product contains mapping data for informational and planning purposes only, and is subject to change. Users should review or consult the primary data sources to ascertain the usability of the information.

Plan Date: April 13, 2026

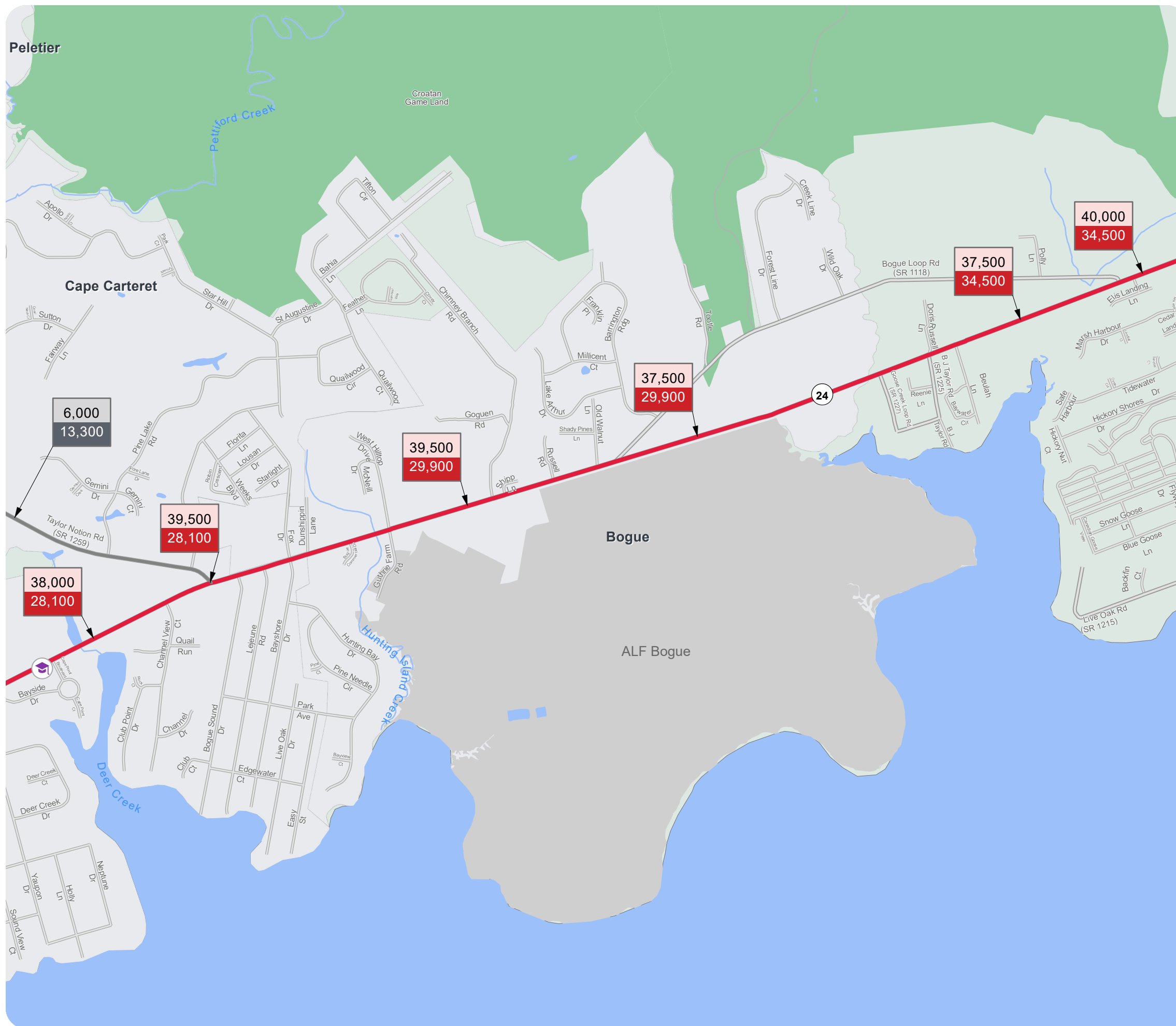


Figure 12  
**VOLUME AND CAPACITY DEFICIENCY**



**Carteret County**  
 CTP Analysis and Information  
 Volume and Capacity Ratio Features  
 ( Future Year 2050)

**Inset 4**  
**Emerald Isle**

Volume and Capacity Ratio Features  
 ( Future Year 2050)

2050 Volume Capacity	Under Capacity (0-0.79)
2050 Volume Capacity	Near Capacity (0.80-0.99)
2050 Volume Capacity	Over Capacity (1.00+)

Other Features

	Studied Roads
	MPO Boundary
	RPO Boundary



Base map date: October 02, 2019

**Legal Disclaimer**

This product contains mapping data for informational and planning purposes only, and is subject to change. Users should review or consult the primary data sources to ascertain the usability of the information.

Plan Date: April 13, 2026



Figure 12  
**VOLUME AND CAPACITY DEFICIENCY**



**Carteret County**  
 CTP Analysis and Information  
 Volume and Capacity Ratio Features  
 (Future Year 2050)

**Inset 5**  
**Newport**

Volume and Capacity Ratio Features  
 (Future Year 2050)

- 2050 Volume  
Capacity
- Under Capacity  
(0-0.79)
- 2050 Volume  
Capacity
- Near Capacity  
(0.80-0.99)
- 2050 Volume  
Capacity
- Over Capacity  
(1.00+)

**Other Features**

- Studied Roads
- MPO Boundary
- RPO Boundary



Base map date: October 02, 2019

**Legal Disclaimer**

This product contains mapping data for informational and planning purposes only, and is subject to change. Users should review or consult the primary data sources to ascertain the usability of the information.

Plan Date: April 13, 2026

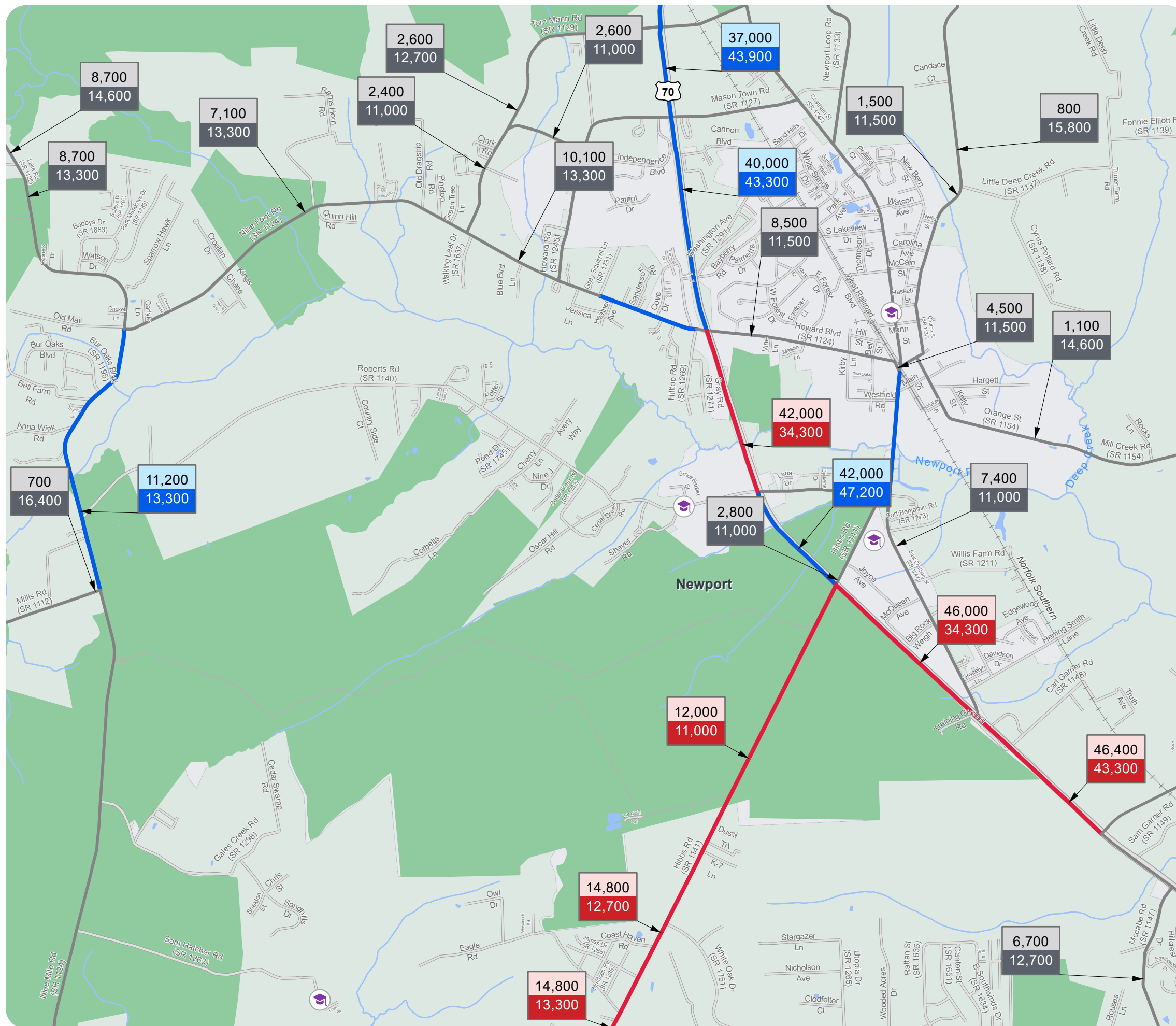


Figure 12  
**VOLUME AND CAPACITY DEFICIENCY**



**Carteret County**  
 CTP Analysis and Information  
 Volume and Capacity Ratio Features  
 (Future Year 2050)

**Inset 6**  
**Morehead City 1**

Volume and Capacity Ratio Features  
 (Future Year 2050)

2050 Volume Capacity	Under Capacity (0-0.79)
2050 Volume Capacity	Near Capacity (0.80-0.99)
2050 Volume Capacity	Over Capacity (1.00+)

**Other Features**

	Studied Roads
	MPO Boundary
	RPO Boundary



Base map date: October 02, 2019

**Legal Disclaimer**

This product contains mapping data for informational and planning purposes only, and is subject to change. Users should review or consult the primary data sources to ascertain the usability of the information.

Plan Date: April 13, 2026

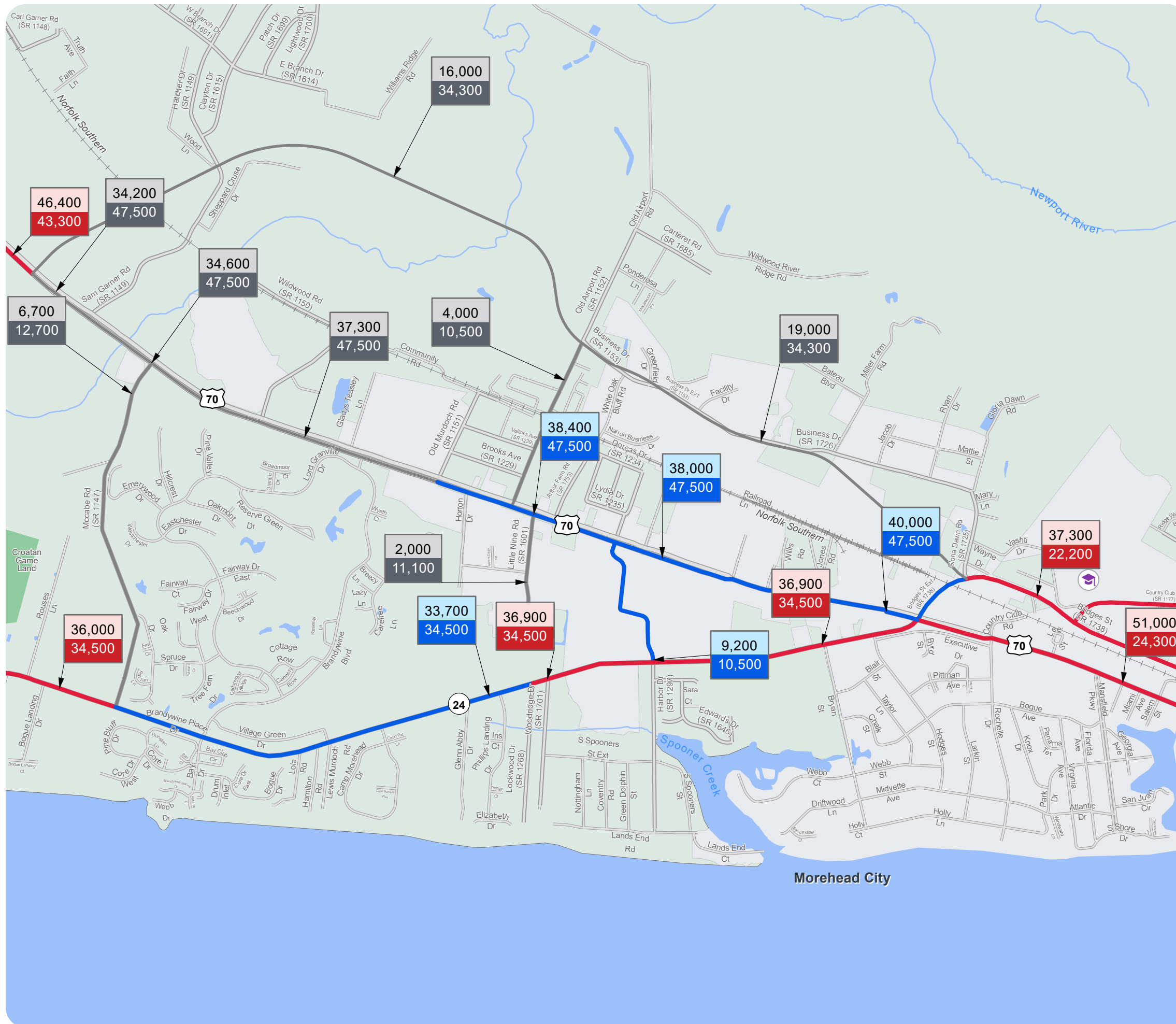




Figure 12  
**VOLUME AND CAPACITY DEFICIENCY**



**Carteret County**  
 CTP Analysis and Information  
 Volume and Capacity Ratio Features  
 (Future Year 2050)

**Inset 8**  
**Morehead City 3**

Volume and Capacity Ratio Features  
 (Future Year 2050)

2050 Volume Capacity	Under Capacity (0-0.79)
2050 Volume Capacity	Near Capacity (0.80-0.99)
2050 Volume Capacity	Over Capacity (1.00+)

Other Features

	Studied Roads
	MPO Boundary
	RPO Boundary



Base map date: October 02, 2019

**Legal Disclaimer**

This product contains mapping data for informational and planning purposes only, and is subject to change. Users should review or consult the primary data sources to ascertain the usability of the information.

Plan Date: April 13, 2026

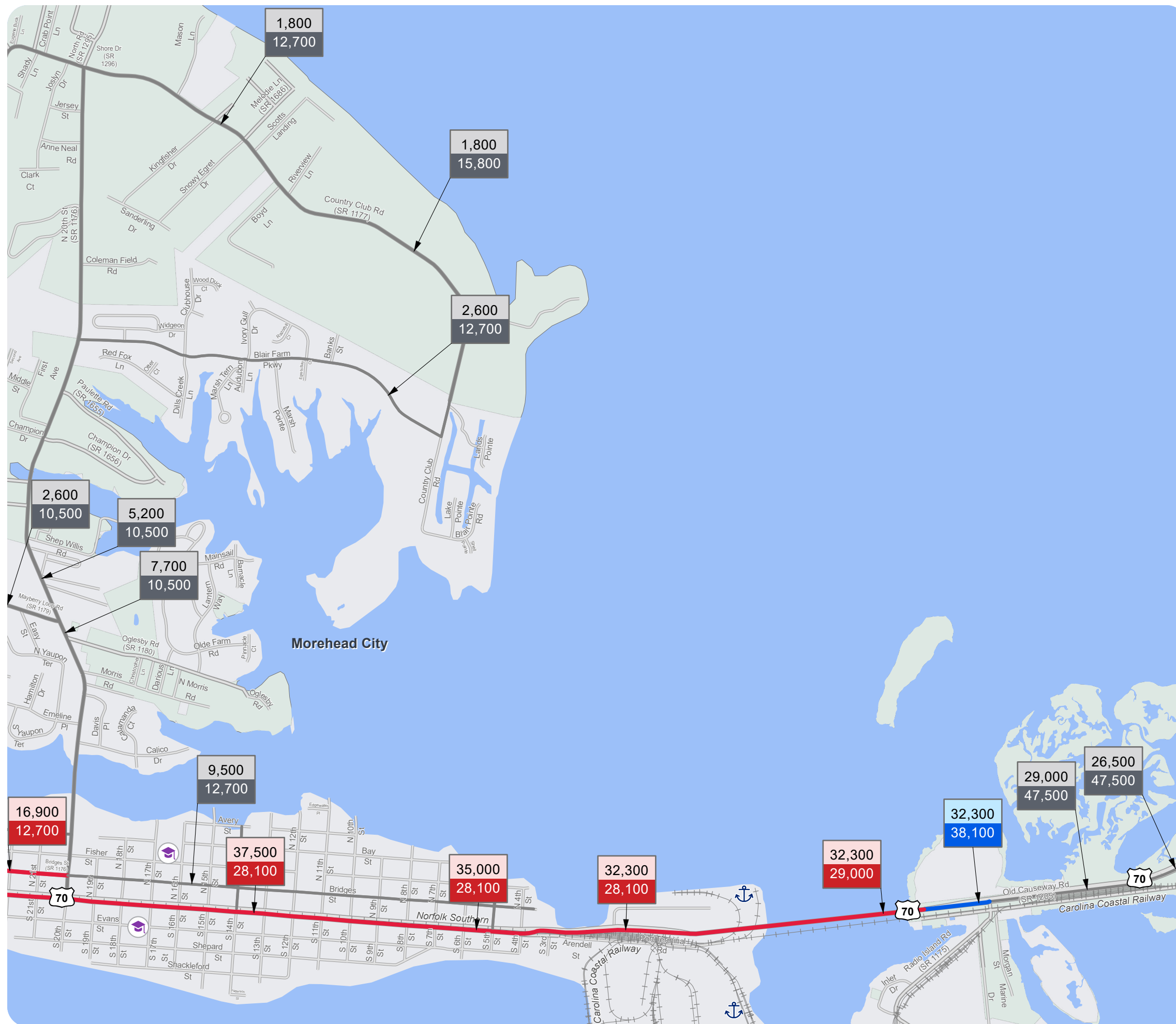


Figure 12  
**VOLUME AND CAPACITY DEFICIENCY**



**Carteret County**  
 CTP Analysis and Information  
 Volume and Capacity Ratio Features  
 (Future Year 2050)

**Inset 9**  
**Beaufort**

Volume and Capacity Ratio Features  
 (Future Year 2050)

2050 Volume Capacity	Under Capacity (0-0.79)
2050 Volume Capacity	Near Capacity (0.80-0.99)
2050 Volume Capacity	Over Capacity (1.00+)

**Other Features**

	Studied Roads
	MPO Boundary
	RPO Boundary



Base map date: October 02, 2019

**Legal Disclaimer**

This product contains mapping data for informational and planning purposes only, and is subject to change. Users should review or consult the primary data sources to ascertain the usability of the information.

Plan Date: April 13, 2026



Figure 12  
**VOLUME AND CAPACITY DEFICIENCY**



**Carteret County**  
 CTP Analysis and Information  
 Volume and Capacity Ratio Features  
 (Future Year 2050)

**Inset 10**  
**Indian Beach**

Volume and Capacity Ratio Features  
 (Future Year 2050)

2050 Volume Capacity	Under Capacity (0-0.79)
2050 Volume Capacity	Near Capacity (0.80-0.99)
2050 Volume Capacity	Over Capacity (1.00+)

Other Features

	Studied Roads
	MPO Boundary
	RPO Boundary



Base map date: October 02, 2019

**Legal Disclaimer**

This product contains mapping data for informational and planning purposes only, and is subject to change. Users should review or consult the primary data sources to ascertain the usability of the information.

Plan Date: April 13, 2026

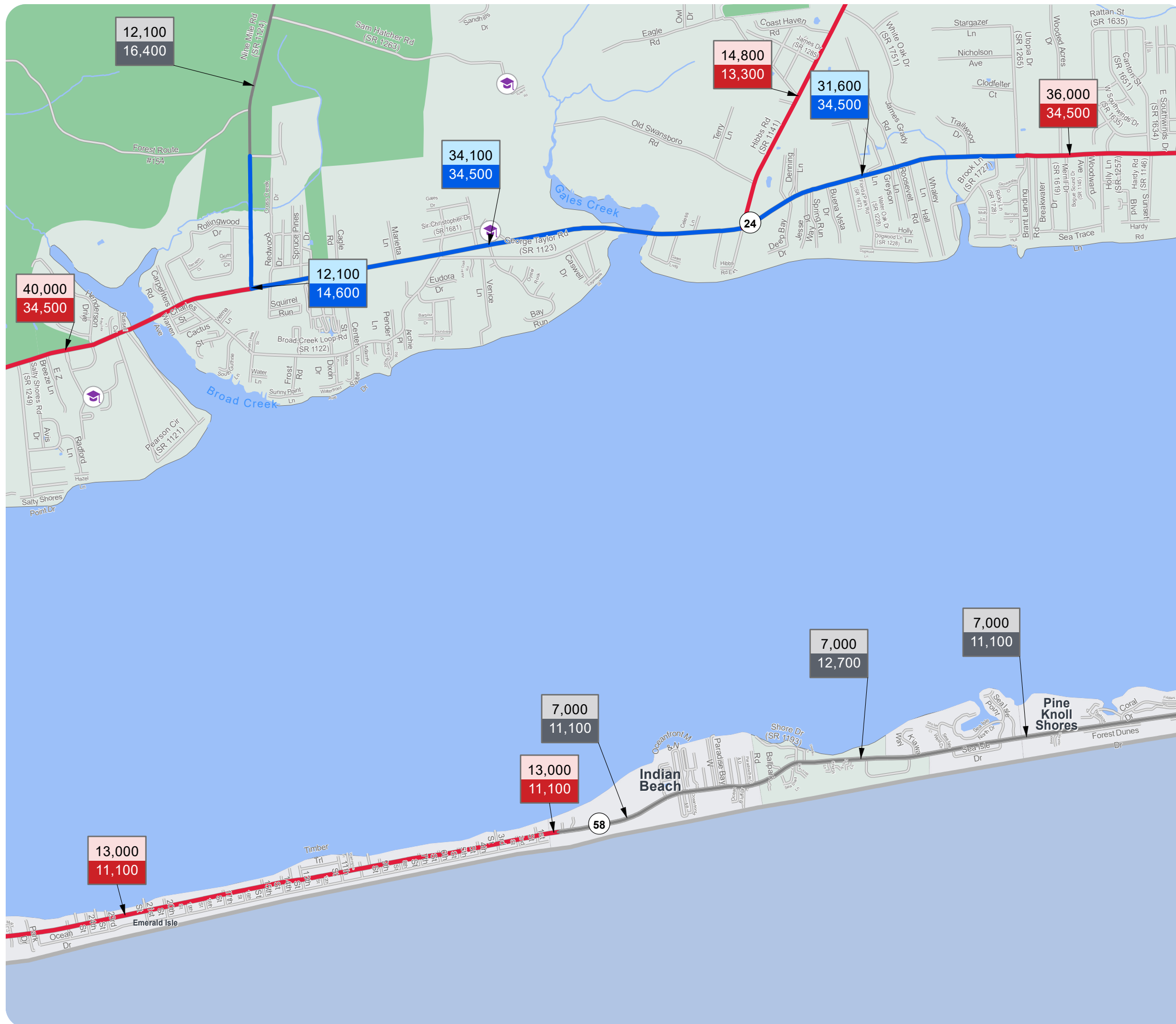


Figure 12  
**VOLUME AND CAPACITY DEFICIENCY**



**Carteret County**  
 CTP Analysis and Information  
 Volume and Capacity Ratio Features  
 ( Future Year 2050 )

**Inset 11**  
**Pine Knoll Shores**

Volume and Capacity Ratio Features  
 ( Future Year 2050 )

2050 Volume Capacity	Under Capacity (0-0.79)
2050 Volume Capacity	Near Capacity (0.80-0.99)
2050 Volume Capacity	Over Capacity (1.00+)

**Other Features**

	Studied Roads
	MPO Boundary
	RPO Boundary



Base map date: October 02, 2019

**Legal Disclaimer**

This product contains mapping data for informational and planning purposes only, and is subject to change. Users should review or consult the primary data sources to ascertain the usability of the information.

Plan Date: April 13, 2026



Figure 12  
**VOLUME AND CAPACITY DEFICIENCY**



**Carteret County**  
 CTP Analysis and Information  
 Volume and Capacity Ratio Features  
 (Future Year 2050)

**Inset 12**  
**Atlantic Beach**

Volume and Capacity Ratio Features  
 (Future Year 2050)

2050 Volume Capacity	Under Capacity (0-0.79)
2050 Volume Capacity	Near Capacity (0.80-0.99)
2050 Volume Capacity	Over Capacity (1.00+)

**Other Features**

	Studied Roads
	MPO Boundary
	RPO Boundary



Base map date: October 02, 2019

**Legal Disclaimer**

This product contains mapping data for informational and planning purposes only, and is subject to change. Users should review or consult the primary data sources to ascertain the usability of the information.

Plan Date: April 13, 2026

